



PER ANNUM

£1,850 Per Annum

Bethnal Green Road

London, E2 6DG

Located seconds from Brick Lane is this renovated 1st floor 1 double bedroom apartment.

The property features a brand new open plan kitchen to reception room, modern shower room and double bedroom.

The property is located seconds from an array of bars, restaurants and shops of Brick Lane, Redchurch Street and Shoreditch High Street.

Liverpool Street and Shoreditch High Street Stations are both located close by.

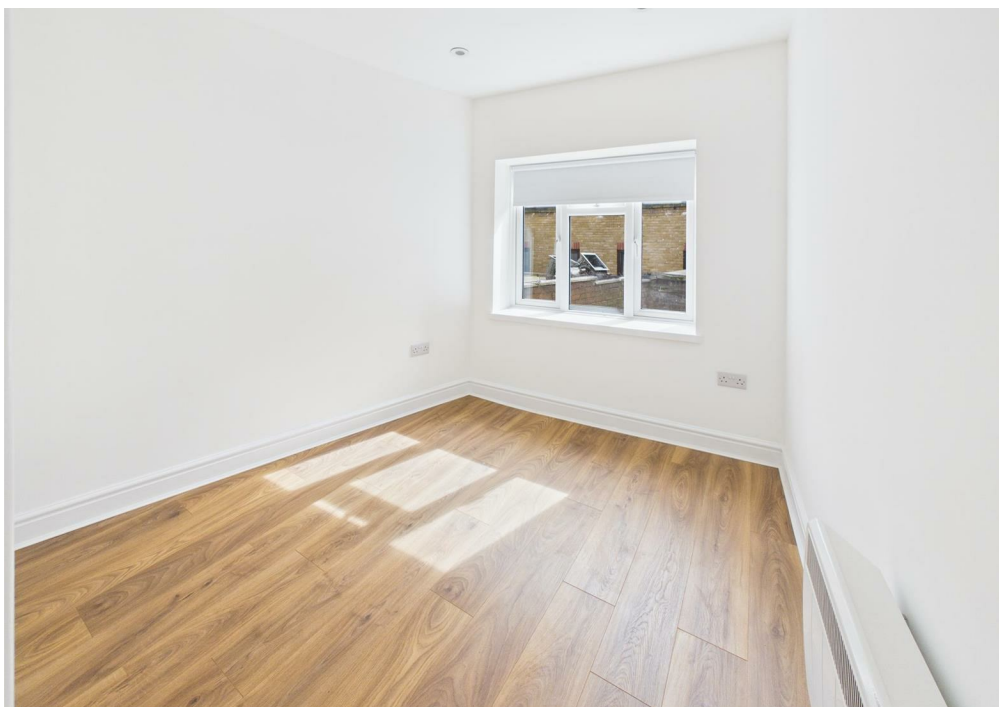
The property is only available for single occupants.

Available: Now

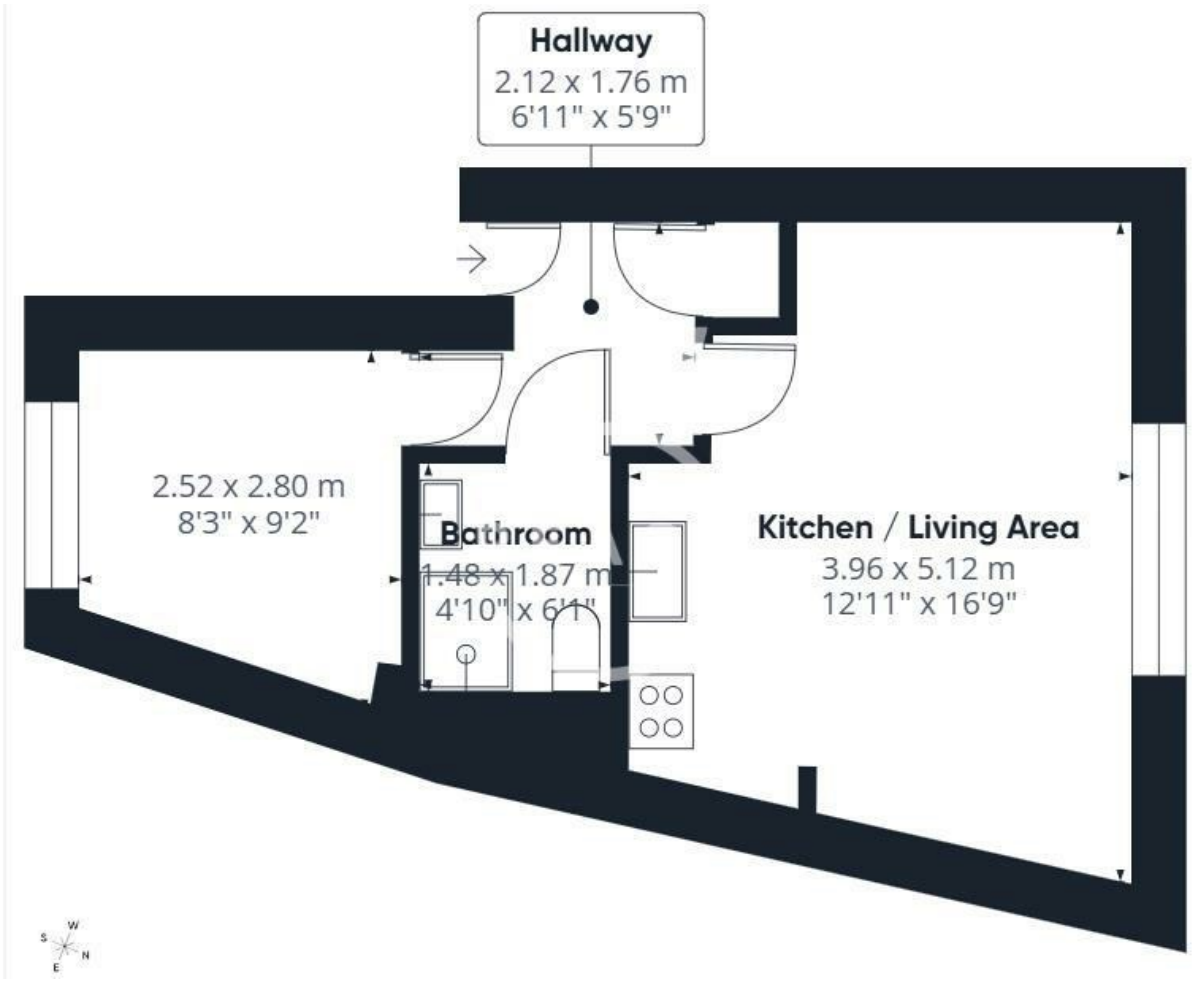
Unfurnished

Council Tax: Band B

5 weeks deposit: £2134







Approximate total area*
30.1 m²
323 ft²

Energy Efficiency Rating		Current	Potential
Very energy efficient - lower running costs			
(92 plus) A			
(81-91) B			
(69-80) C			
(55-68) D		60	60
(39-54) E			
(21-38) F			
(1-20) G			
Not energy efficient - higher running costs			
England & Wales	EU Directive 2002/91/EC		

(1) Excluding balconies and terraces

Calculations reference the RICS IPMS 3C standard. Measurements are approximate and not to scale. This floor plan is intended for illustration only.

GIRAFFE360

Agents Note: Whilst every care has been taken to prepare these particulars, they are for guidance purposes only. All measurements are approximate and are for general guidance purposes only and whilst every care has been taken to ensure their accuracy, they should not be relied upon and potential buyers/tenants are advised to recheck the measurements

<p>OFFICE ADDRESS 88 Cheshire Street London E2 6EH</p>	<p>OFFICE DETAILS 0207 739 6969 info@peachproperties.com www.peachproperties.com</p>
---	---